

The background of the slide is a photograph of the United States Capitol building in Washington, D.C., taken from a low angle. The building's white neoclassical architecture, including its iconic dome and portico with columns, is clearly visible against a clear blue sky. The foreground shows some trees and a green lawn.

“NACLA CMET Recognition”
for the
ACIL “P2” Conference

Robert Uttenweiler – NACLA Executive Officer

Wednesday / March 20, 2013



CHARTER

- **CMET TECHNICAL SUB-COMMITTEE CHARTER**

- Date: July 14, 2008

- 1.0 **PURPOSE**

- In support of the NACLA/ACIL Memorandum of Understanding (MoU) the CMET Technical Sub-Committee focuses on the development of sector specific technical requirements for CMET Testing.



Charter

- **2.0 GOALS**

- 2.1 Develop a comparison document for AASHTO R18, ISO/IEC 17025 and NISTIR 7012;
- 2.2 Develop a comprehensive general check-sheet for laboratory and assessor use related to the respective standards;
- 2.3 Develop a series of specific technical standard check-sheets for CMET Test Methods;
- 2.4 Collaborate with ACIL's Independent Laboratories Institute (ILI) to develop training materials to train assessors and laboratories utilizing the comparison document and check-sheets.



Charter

- **Goals**

- 2.5 Promote the use of ACIL/NACLA CMET documents and assessors to specifiers and accreditation bodies.
- 2.6 Promote the use of NACLA recognized Accreditation Bodies who have CMET on their Scopes of Recognition via the use of ACIL/NACLA developed check-sheets and assessors.



Charter

- **3.0 MEMBERSHIP**

- The CMET Sub-Committee shall be open to any representatives of NACLA and/or ACIL member organizations. There are Co-Chairs, one from ACIL and one from NACLA. The Chairs shall jointly select a Vice Chair and Secretary from members of the CMET Sub-Committee. The NACLA Chair is appointed by and reports to the NACLA Technical Committee Chair and the ACIL Chair is appointed by and reports to the ACIL CMET Committee Chair.



Charter

- **4.0 GUIDELINES**

- 4.1 The Co-Chairs of the CMET Sub-Committee shall jointly decide what and how the activities to support the goals are to be carried out subject to the advice of the Committee members, general direction of the ACIL CMET Committee and NACLA Technical Committee.
- 4.2 The Co-Chairs shall prepare periodic written reports for the ACIL CMET Committee and NACLA Technical Committee.
- 4.3 The Co-Chairs shall distribute the appropriate information to the committee members to assure participation and transparency during document development.
- 4.4 Periodic meetings shall be scheduled with the cooperation NACLA and ACIL to assure all members are heard and can assist in the development.



NACLA

- NACLA was founded in 1998
 - IRS 501 (c) (6) not-for-profit organization
- The “gold standard” for recognition is ISO / IEC 17025 for laboratories
- NACLA supports 17025 for recognition



NACLA

- NACLA works in “sector-specific” recognition areas as defined by various U.S. departments and agencies; i.e., Federal Highway Administration / D.o.T., US Navy, NASA, and others.
- NACLA has a vertically-integrated structure that includes specifier/regulators, accreditation bodies (ABs), laboratories and others.



NACLA

- NACLA's primary mission is to evaluate U.S. laboratory accreditation bodies (ABs) and to grant recognition to those ABs found to be in compliance with NACLA procedures and the relevant international standards for competent ABs



NACLA

- NACLA's leadership body, the Board of Directors/Operations Council is composed of balanced representation from the four key stakeholder groups: Industry, Government, Laboratories and Accreditation Bodies.
- NACLA also provides educational and training opportunities to persons interested in laboratory accreditation.

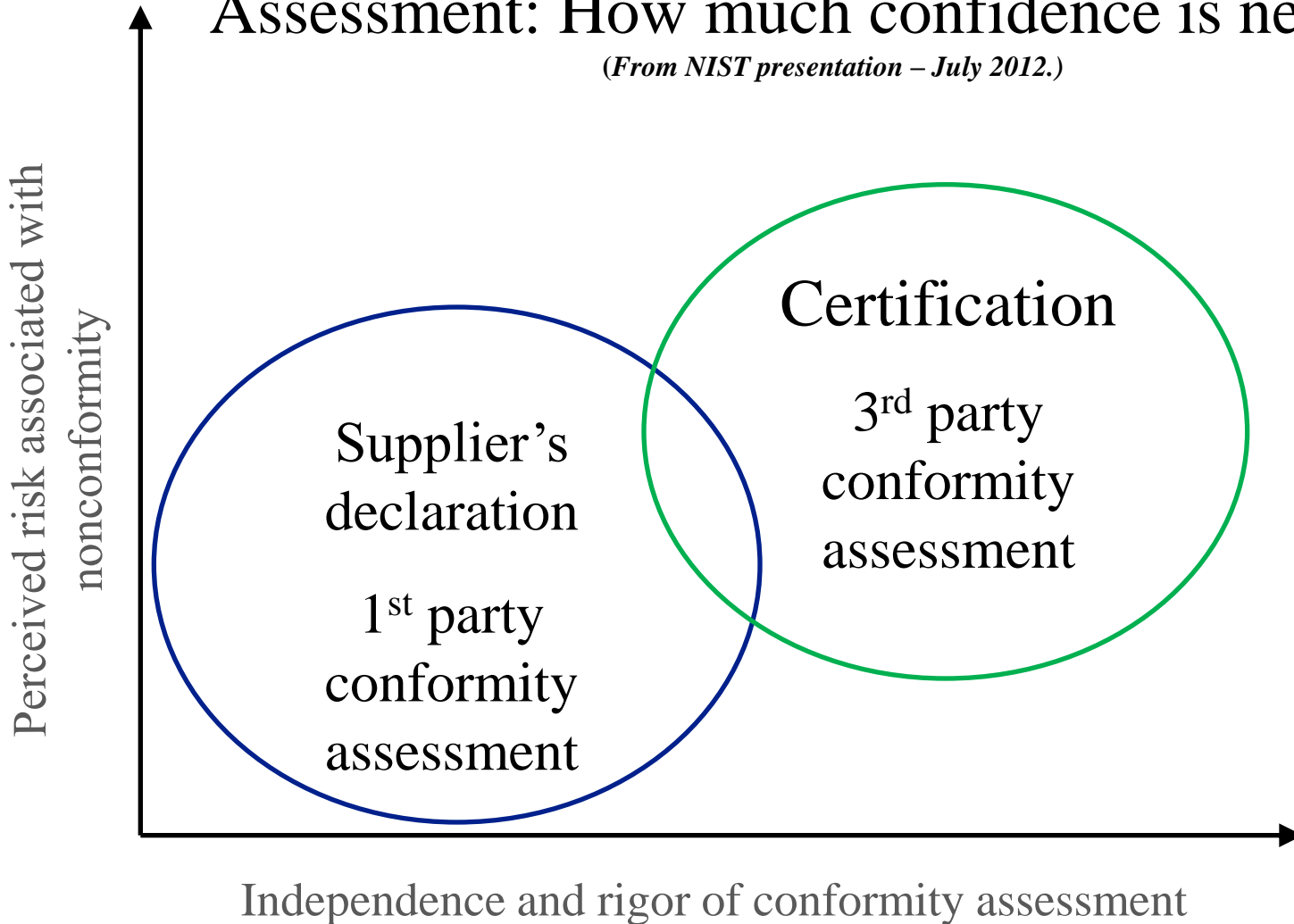


FHWA Acceptance

- In October 2011, the US Department of Transportation, Federal Highway Administration formally accepted the Construction Materials (CMET)
 - NACLA CMET Recognition has been awarded to:
 - Laboratory Accreditation Bureau (L-A-B), Fort Wayne, IN
 - Construction Materials Engineering Council (CMEC), Apopka, FL
 - NACLA’s CMET recognition was found to satisfy the Federal Highway Administration (FHWA) regulation titled “Quality Assurance Procedures for Construction” 23 CFR 637 paragraphs 637.209 (a) (2), (3), and (4).
 - Complete information is available on the NACLA web site – [a.net](#) under the “Documents” tab.

Risk Based Approach to Conformity Assessment: How much confidence is needed?

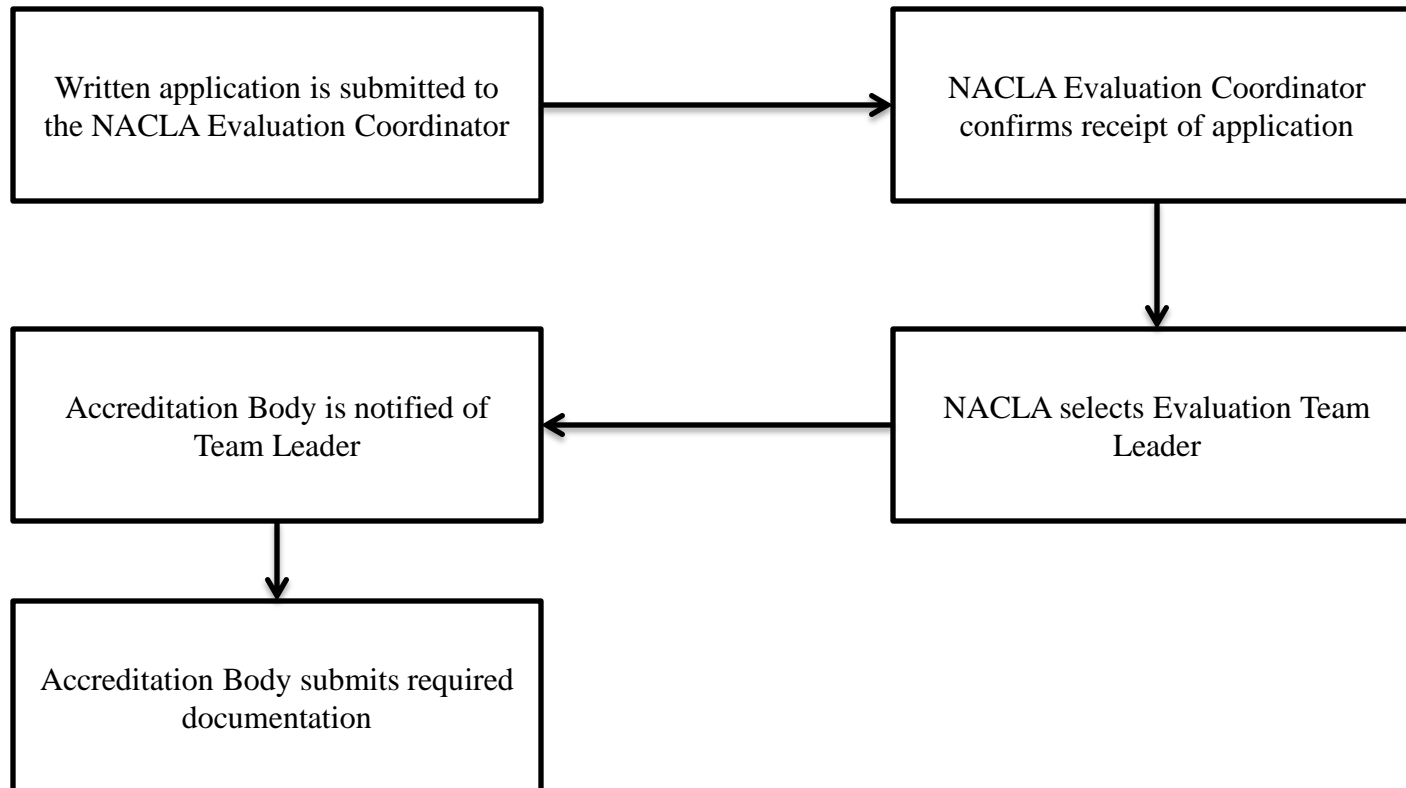
(From NIST presentation – July 2012.)





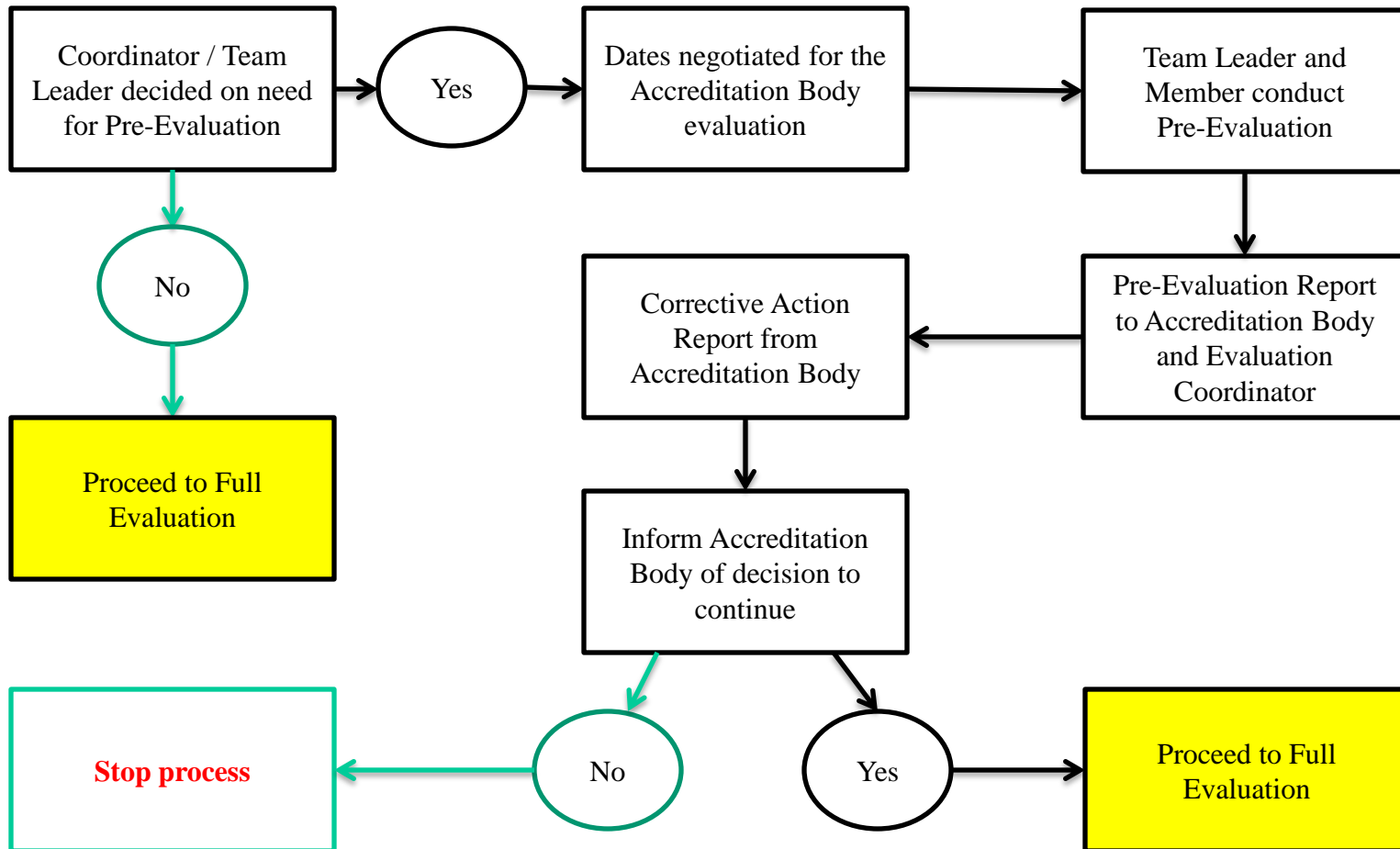
NACLA's CMET Recognition

Application Process



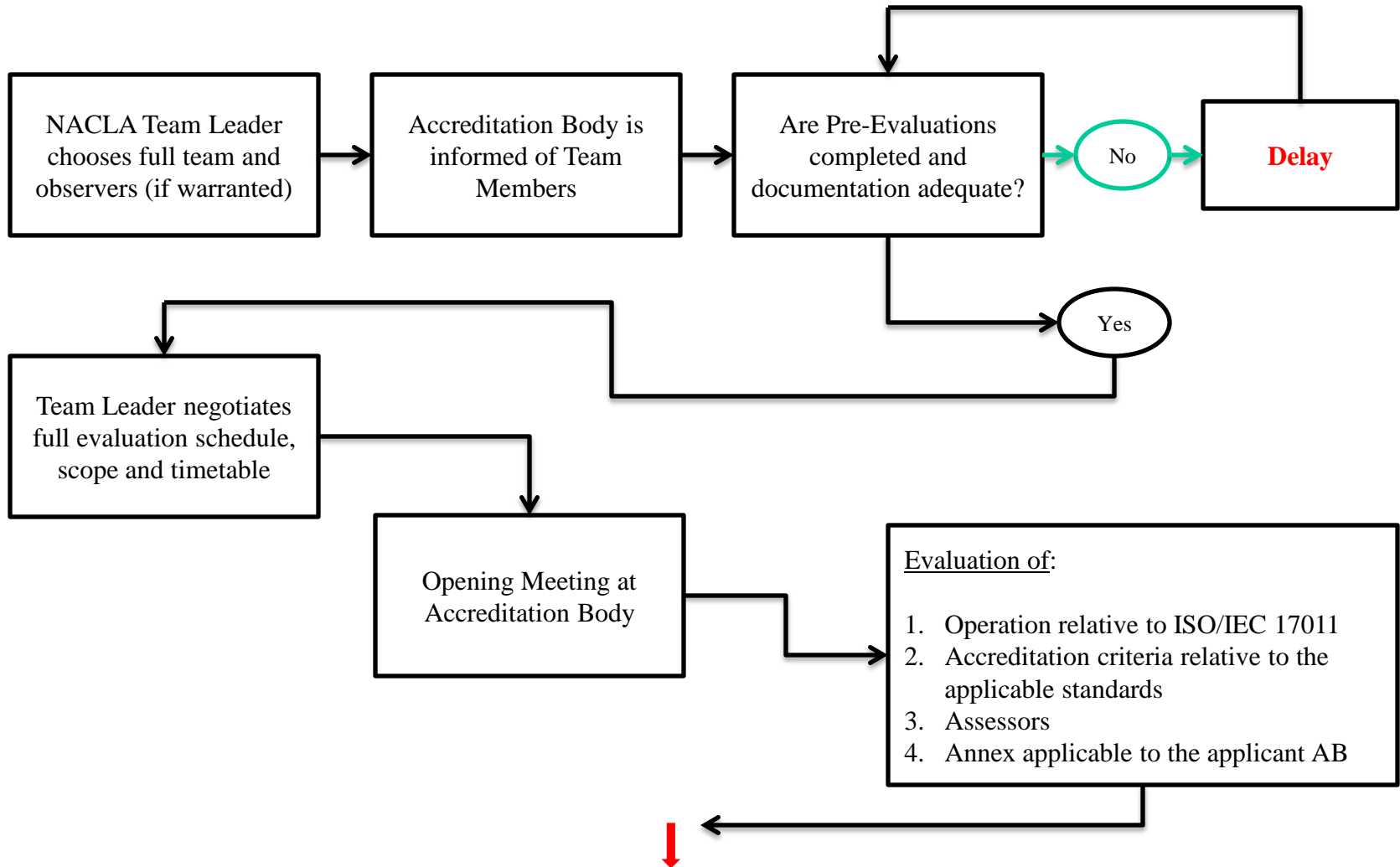


Pre-Evaluation Process

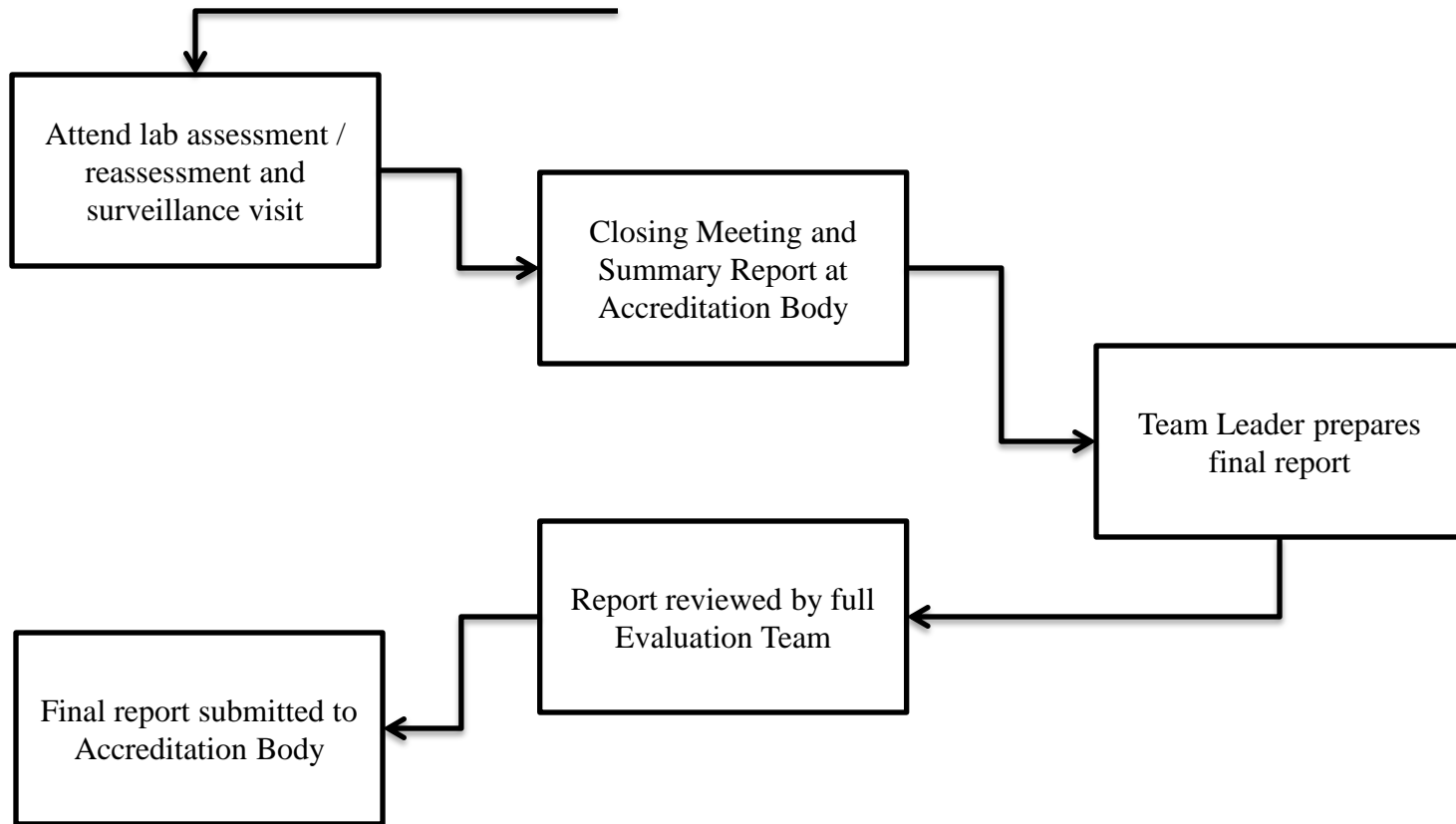




Evaluation Process

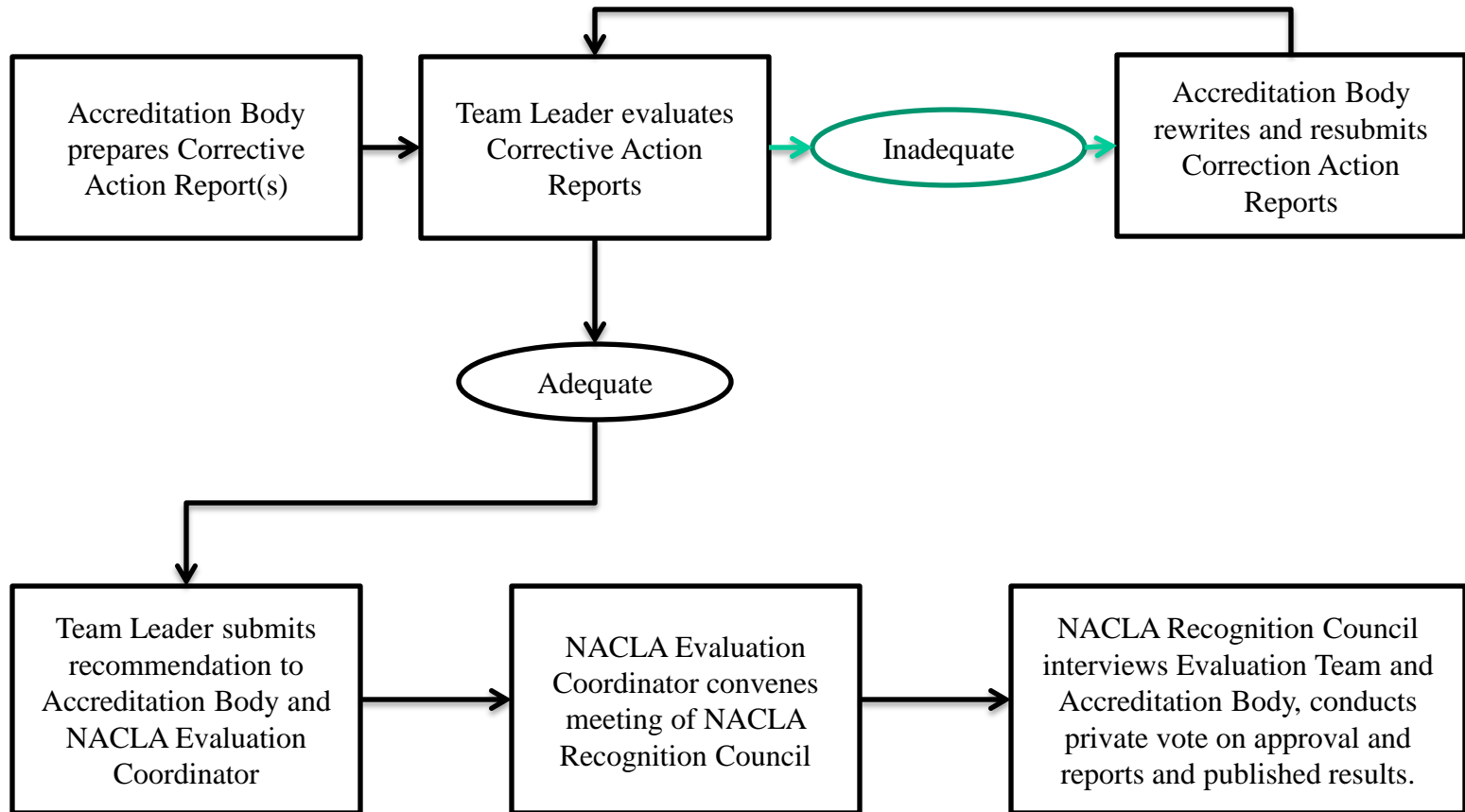


Evaluation Process *(continued)*





Corrective Action Process





NACLA Executive Officer

- Robert “Bob” Uttenweiler
 - Association professional for over 25 years
 - Government affairs writer, columnist and tactician
 - Registered lobbyist in DC – ’95 to ‘99
 - Former Chair, GWSAE Government and Public Affairs Advisory Council - GWSAE / ASAE member
 - Member – ASAE Ethics Committee (2013)
 - Undergraduate degree - Earth Science
 - Master’s Degree – Speech / Broadcasting



National Cooperation for Laboratory Accreditation (NACLA)

- Contact NACLA –
 - 1875 I Street, NW
 - Suite 500
 - Washington, DC 20006
 - www.nacla.net
 - Ph: 202-887-5872 x107
 - info@nacla.net